

Approved Oct. 20, 2006
(Date)

James H. Whitelaw

Highland County Zoning Administrator

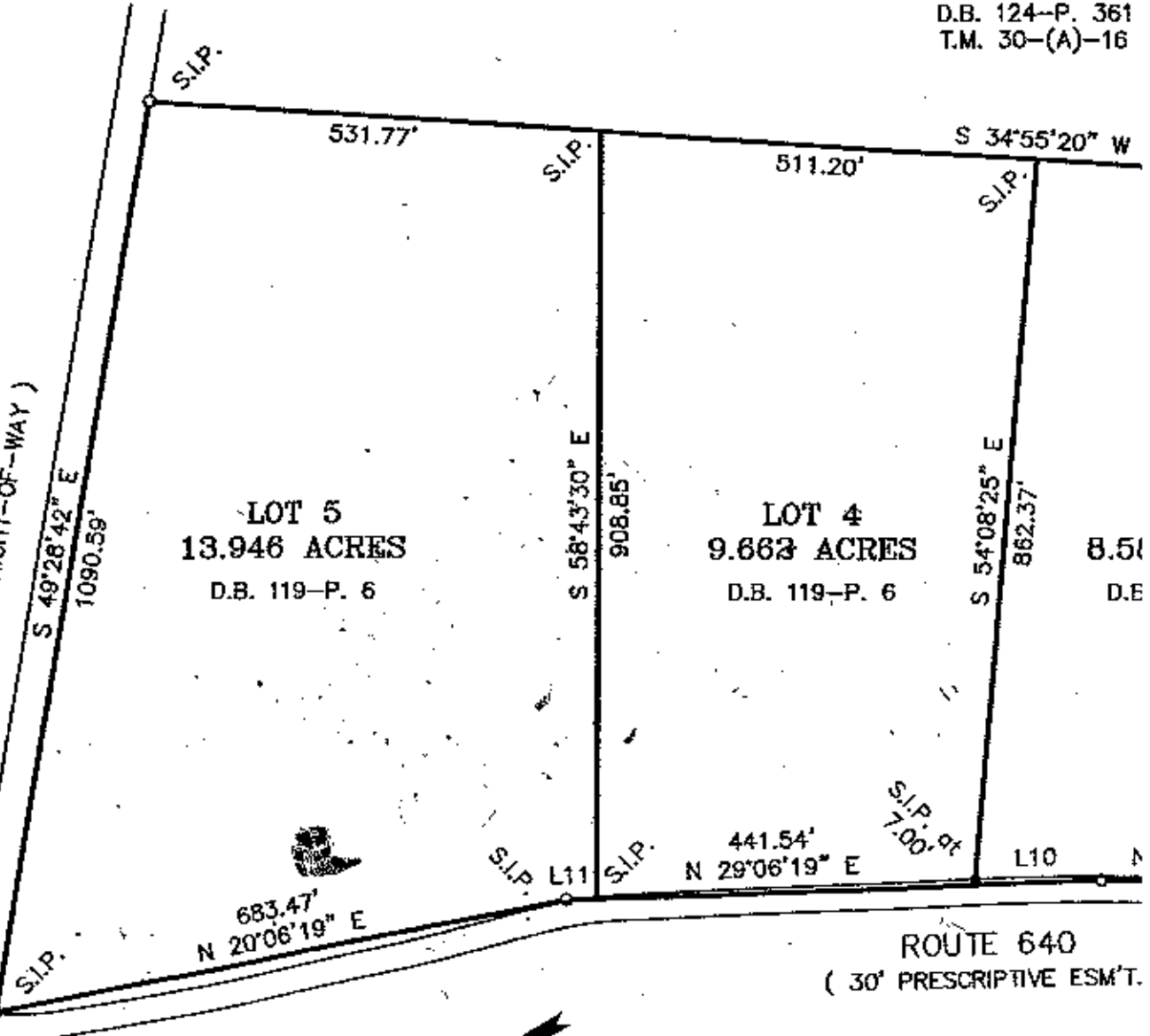
APPROVED

THE BOUNDARY SURVEY SHOWN HEREON IS BASED ON A CURRENT FIELD SURVEY.

F.I.P. = FOUND IRON PIN
S.I.P. = SET IRON PIN

SMITH & FULTON
D.B. 124-P. 361
T.M. 30-(A)-16

ROUTE 638
(40' RIGHT-OF-WAY)



Meridian from
D.B. 118-P. 855

LINE	BEARING	DISTANCE
L1	N 22°43'51" E	97.63'
L2	N 12°18'48" E	135.37'
L3	N 22°50'46" E	18.66'
L4	N 09°38'23" E	83.00'
L5	N 32°01'19" E	40.57'
L6	S 87°53'50" W	91.32'

LINE	BEARING	DISTANCE
L7	N 74°48'37" W	39.34'
L8	N 62°04'47" W	50.89'
L9	N 76°45'24" W	149.37'
L10	N 29°06'19" E	148.38'
L11	N 29°06'19" E	35.43'